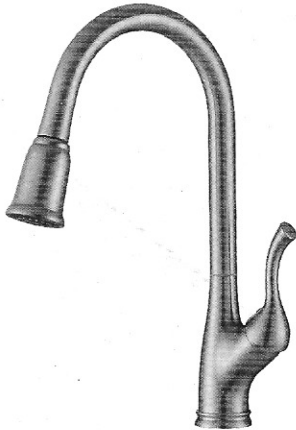


## Helpful Information

**Model : K1117 Series**

Chrome, Brushed Nickel PVD.



### Helpful Tools

#### Tools:

Gather the necessary tools as shown below to complete the installation of this faucet. Some may not be needed depending on the model of faucet you are installing. Check with your local hardware store on the requirements of your installation situation.



Plumber's Putty



Flashlight



Basin Wrench



Safety Glasses



Screwdriver



Pliers



Channel Locks



Adjustable Wrench

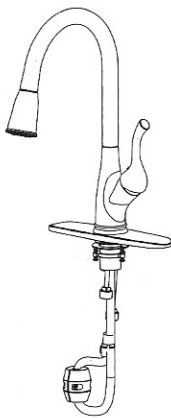
### Single Handle Kitchen Pull-down Faucet

3 Hole or Single Hole Installation

1

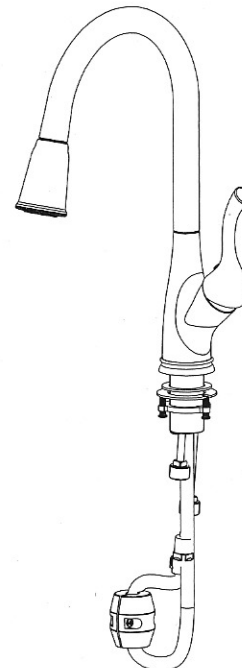
2

### Install With Deck Plate



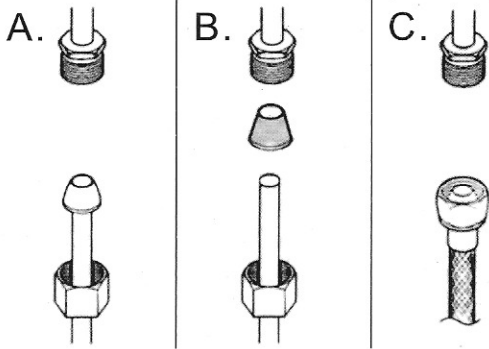
1. Remove the mounting nut, rubber and metal washer from the shank of the faucet.
2. Press the sponge putty gasket on to the cover plate. Install the deck plate over the 3 holes of your sink.
3. Insert faucet supply tubes and mounting shank through the hole in the deck plate.
4. From underneath sink, place washer and mounting nut over pull-out hose and supply tubes. Thread loosely onto faucet's shank and tighten the 3 screws with screw driver.
5. Insert the spray hose into hose quick connector.  
**CAUTION:** Make sure hose is properly engaged and secure in faucet hose quick connector.
6. Locate lowest point of the hose on the spout side and attach hose weight kit.
7. Connect Hot and Cold faucet supply tubes to supply stops.  
**CAUTION:** Do Not Over Tighten Supply Nuts. Over tightening supply nuts may damage washer or crack the supply nuts.
8. Remove spray head from faucet and flush water through faucet to any line trash.
9. Assemble spray head and run water through faucet while checking for leaks at all connection.

### Install Without Deck Plate



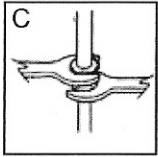
1. Remove the mounting nut, rubber and metal washer from the shank of the faucet
2. Insert faucet supply tubes and mounting shank through the hole in the countertop or sink.
3. Following step (4) to (8) from page 3.

## Configuration



Connect to water supply lines with either:

- (A) 3/8" O.D. Copper tubing (ball nose risers with the coupling nuts or;
- (B) 3/8" Copper tubing (no ball) with supplied tube head interior connector or;
- (C) IPS faucet connectors (1/2" )



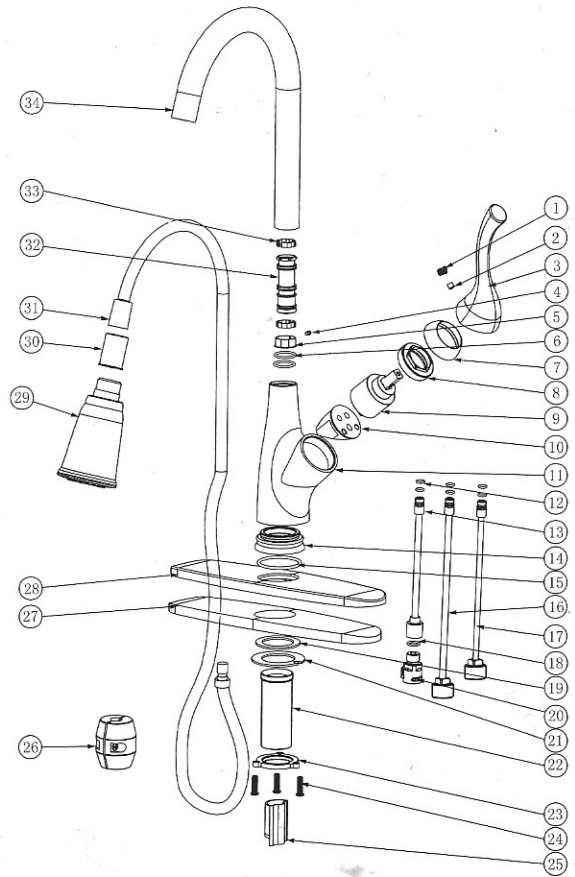
### Important:

### Important:

Tighten connection with two wrench to prevent damage to tube body. Be careful not to bend the stem as this will void the product warranty.

5

## Parts Diagram



6

## Parts List

34	P. 11. 01. 002101	Spout	1
33	P. 07. 02. 005	Assembly	2
32	P. 04. 03. 036	Connector	1
31	P. 20. 11. 004101	Spray Hose	1
30	P. 07. 02. 003	Hose Guide	1
29	P. 17. 10. 013201	Spray	1
28	P. 14. 11. 021101	Deck Plate	1
27	P. 06. 04. 009	Washer	1
26	P. 22. 00. 011301	Lead Ball	1
25	P. 07. 02. 004	Spray Hose Guide	1
24	P. 03. 04. 008	Set Screw	3
23	P. 10. 33. 005	Mount Nut	1
22	P. 10. 31. 002	Coop	1
21	P. 10. 04. 002	Clamp	1
20	P. 22. 00. 015	Hose Quick Connect	1
19	P. 06. 02. 003	Gasket	1
18	P. 06. 00. 037	O-Ring	1
17	P. 20. 01. 005	Supply Hose	1
16	P. 20. 01. 006	Supply Hose	1
15	P. 06. 00. 004	O-Ring	1
14	P. 10. 10. 019101	Ring	1
13	P. 20. 01. 027	Copper Tube	1
12	P. 06. 00. 013	O-Ring	6
11	P. 13. 05. 006101	Body	1
10	P. 12. 11. 008	Bowels Core	1
9	P. 18. 32. 003	Ceramic Cartridge	1
8	P. 03. 13. 004	Lock Nut	1
7	P. 02. 04. 007101	Trim Cap	1
6	P. 06. 00. 017	O-Ring	2
5	P. 07. 02. 002	Assembly	1
4	p. 03. 01. 006	Set Screw	1
3	p. 01. 12. 022101	Handle	1
2	p. 03. 01. 001	Set Screw	1
1	P. 02. 07. 002101	Button	1
N0.	Pattern code	Pattern name	Q. T. Y